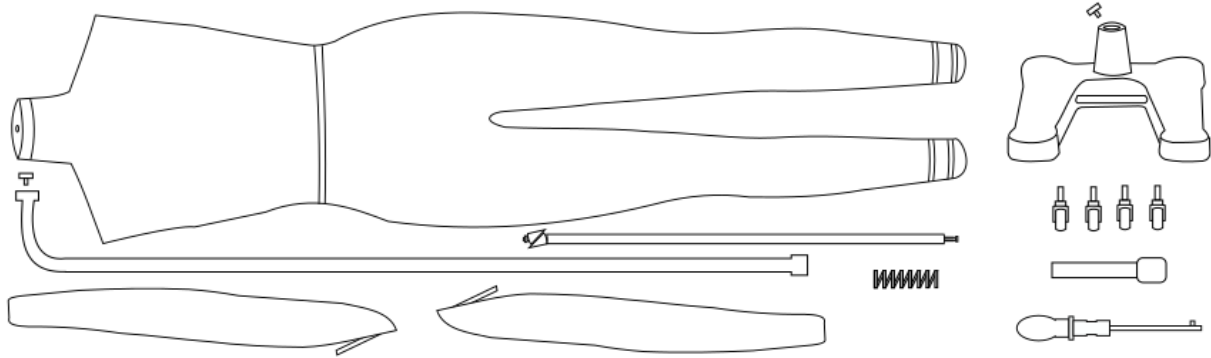


THE SHOP COMPANY

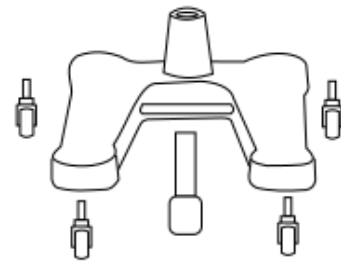
Full Body Assembly Guide (FCS)



Step 1.

Install all four castors (wheels) by screwing them into the four holes underneath the base.

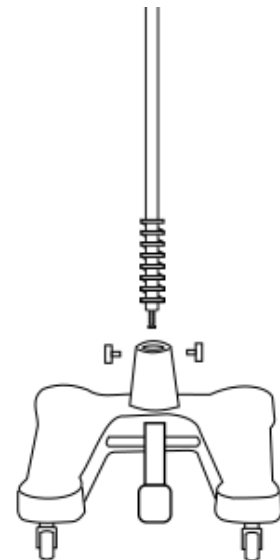
Slide the pedal into the base so that the center of the pedal rests on the small bar and the end of the pedal is squarely underneath the base.



Step 2.

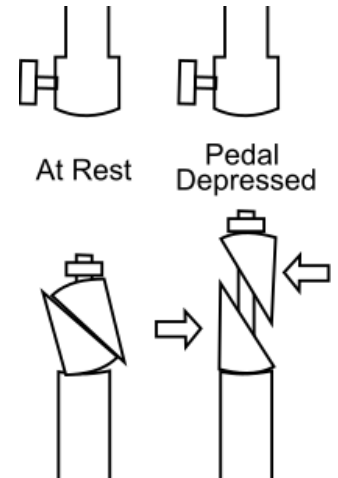
The chrome pole has two ends. The top has two split triangles protruding from the width of the pole. The bottom of the pole has a mini spring and nut.

Slide the bottom of the chrome pole into the large spring and through the hole of the base. The pole should pass all of the way through until it rests on the back of the base pedal (pushing the front of the pedal upwards). The pole then needs to be secured to the base by tightening the included t-screws for the base.



Step 3.

When the pole is at rest, the inner tension should be causing the split triangles on the top of the pole to expand outwards. Once the pole is securely fastened to the base, depress the base pedal to release this tension and push the triangles together so that they are in line with the width of the rest of the chrome pole. The upper curved black pole can now be slid onto the chrome pole. Once the upper pole is at your desired height, release the pedal (which will cause the triangles to re-expand and will hold the black pole in place).

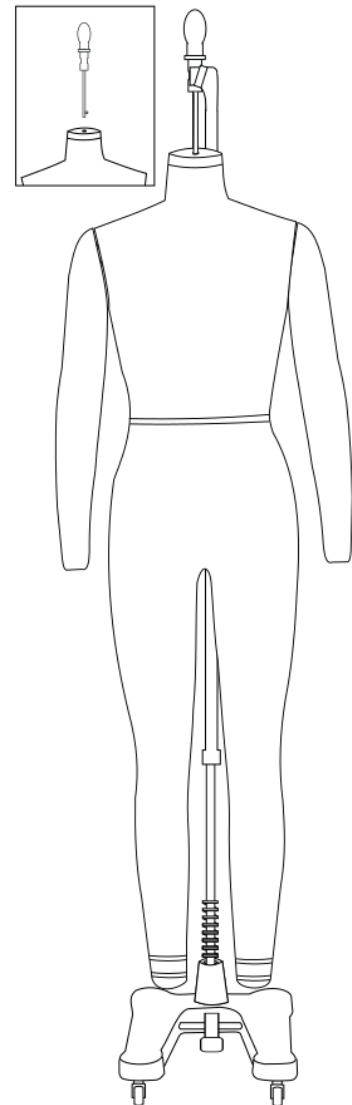


Step 4.

Twist and lock the finial into the top of the form's neck.

Hang the body form on the completed base pole. The finial should be secured to the claw end of the curved black pole with the other included t-screw.

To adjust the height of the form at any time, simply depress the pedal, set the curved pole at the desired height and release the pedal. There is also an additional t-screw on the bottom of the black pole to be used if extra hold is ever required.



Step 4.1

(optional) For use with very heavy garments (or if you ever find the pole loosening throughout the life of your TSC form), the pole's tension can be tightened. To do so, you would need two wrenches. One wrench should be used to hold the nut at the top of the pole (above the triangle section) in place while the second wrench is used to twist the nut at the bottom clockwise. The farther up the pole this bottom nut is screwed on, the stronger the pole's tension will be.



Questions? Please reach out! help@theshopcompany.com